

# PASSIVE TREATMENT OF MINE DRAINAGE WATERS: THE USE OF BIOCHARS AND WOOD PRODUCTS TO ENHANCE METAL REMOVAL EFFICIENCY

A. Janin<sup>1</sup> and J. Harrington<sup>2</sup>

<sup>1</sup>Yukon College – Yukon Research Centre  
500 College Drive, Whitehorse, YT Y1A 5K4

<sup>2</sup>Alexco Environmental Group  
7720 East Bellevue Avenue, Suite B-104, Greenwood Village, CO 80111

## ABSTRACT

Passive biological treatments have been proposed as a possible efficient and cost effective treatment method for metal bearing water discharged from mine sites after closure. Several biofilters are under study in Yukon and have produced variable, but promising results up to now. However, concerns are typically expressed around biological treatments and their suitability in northern, colder climates. Biofilters allow for metal removal using a variety of chemical, physical and biological mechanisms. If biological processes are affected by a cold climate to some extent, chemical processes are typically not affected by the temperature the same way and can be reliable in cold waters. This study focused on metal sorption and metal removal by chemical mechanisms and assessed the sorption capacity of biochar and wood products which could be later introduced in bioreactors to help with metal removal from mine-impacted cold waters.

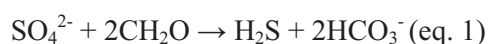
Biochars allowed for more than 90% removal of Cd, Cu and Zn from a metal-bearing effluent along with 35 to 69% removal of arsenic. Wood products displayed good removal capacity as well, in the range of 51 to 94% for Cd, Cu and Zn. However, arsenic and selenium removal by wood products was limited; Se also showed minimal sorption on biochars and was in one case released during sorption testing. Metal leaching from the materials was observed to some extent, including Cu and Zn from poplar and spruce products. Amongst spruce products, the chips from the trunk proved to be slightly more efficient than the needles. Overall, biochars and wood products showed potential for use in water treatment for metal sequestration in combination with other mechanisms such as sulfide precipitation in sulfate-reducing bioreactors. Such materials could be collected or produced on remote mine sites and could help with mine remediation.

**Key Words:** Water Treatment, Metal Removal, Metal Sorption, Adsorption, Bioreactors, Bioremediation.

## INTRODUCTION

Water management in the mining industry has become a priority focus in our world, which has been increasingly concerned with sustainable development. To lower their footprint on the environment, mines are constantly working toward limitation of contaminant discharge to the environment. Hard rock mines have to closely control the concentrations of metals according to federal and provincial/territorial regulations, which leads to the treatment of mine-affected waters, including run-off waters, drainage from tailings or waste rock pads, process waters, etc. Water treatment is required during operation of the mines as well as after closure for the long term. Current water treatment technology development is

focused on long-term passive treatments that require low operation and maintenance. Various passive treatments are available, including chemical adsorption and bioremediation (Johnson and Hallberg 2005). Along with metals, mine waters commonly contain high sulfate content that results from the breakdown of sulfide minerals (Akcil and Koldas 2006; Kalin et al. 2006). There is an increased interest in the use of Sulfate-Reducing Bacteria (SRB) to help with metal removal from mine waters (Dar et al. 2007; Genty 2011; Jong and Parry 2003; McCauley et al. 2009; Neculita et al. 2010; USEPA 2002). Under anaerobic conditions, SRB reduce sulfate ( $\text{SO}_4^{2-}$ ) into sulfide ( $\text{S}^{2-}$ ) using electrons from organic matter. Sulfides, in turn, precipitate metals. The solubility of metal sulfides being generally very limited, it consequently lowers the concentration of metals in the effluent and provides a stable metal precipitate (Blais et al. 2008). To accomplish sulfide production, SRB catalyze the oxidation of organic carbon from the surrounding organic matter (eq. 1), where  $\text{CH}_2\text{O}$  represents organic carbon (Waybrant et al. 1998):



Anaerobic bioreactors are being studied in the mining industry for effluent treatment. In these systems, the effluent passes through a biofilter (e.g., in trenches) filled with permeable solid support (gravel, sand) and substrate (organic matter). The substrate used to support SRB growth can be variable. Neculita and Zagury (2008) showed that cellulosic materials like wood waste have a beneficial effect on SRB treatment efficiency. Wood products (leaf mulch, wood chips, sawdust, wood compost, peat moss) mixed with sewage sludge or manure can be an excellent substrate for SRB and have been shown to achieve reduction of metals concentration in mine effluent (Neculita et al. 2010; Waybrant et al. 1998). Besides efficiency in the short-term, the ideal mixture of substrate should also last in the long term, i.e., not be too biodegrade and deplete before the end of the life time of the bioreactor, or to extend the useful life of the bioreactor before it would require replacement or refreshment of the media. Drury (2006) used a mathematical model and showed that organic matter with an older apparent age, less biodegradable, can sustain bioreactor efficiency for longer duration. Additionally, the residual organic products may improve the stability of the metal sulfide precipitate once the treatment system is closed.

In northern climates, when the temperature is low, concerns have been expressed about the efficiency of SRB to sustain a sufficient level of biological activity during winter time to maintain treatment efficiency (Nordin 2010). The objective of this study is to assess if a range of substrates can also help with metal removal using chemical mechanisms, which are generally not as temperature-dependent as biological mechanisms. Besides providing feed to SRB, solid substrates can also act as a metal adsorbent. Cellulosic materials like sawdust and wood chips are known for their metal adsorption capacity (Argun et al. 2008; Keng et al. 2013; O'Connell et al. 2008) due to reactive groups within the substrate. Wood is an abundant resource in remote mine sites in northern Canada and other northern climates, and wood chips could easily be included in bioreactors to help metal removal by providing biodegradable organic matter and metals site adsorption. This study looked at the adsorption capacity of Spruce (trunk and needles) and Poplar (trunk) chips, as both species are very common in Yukon mine sites. In addition, biochars made from wood products were also studied. Biochar is defined as a carbon-rich material produced by thermal decomposition of organic material under limited supply of oxygen at relatively low temperature ( $<700^\circ\text{C}$ ) (Lehmann and Joseph 2009). On-going projects look at the construction of mobile pyrolysis ovens (personal communications with K. Stewart, Yukon Research Centre, M. Garcia-Perez, University of

Washington). Hence biochars could be produced in remote locations, providing that the mine site has access roads. Due to the thermal decomposition, the remaining biochar is recalcitrant and is likely to persist in bioreactors on the long-term. Biochars are also capable of adsorbing metals on their surfaces and several biochars proved to have good potential for metal removal from effluent, although metal adsorption capacities can be very variable. Metal sorption by biochars depends largely on biochar characteristics, including feedstock, pyrolysis temperature, oxygen content, etc. Table 1 presents the adsorption capacity measured by various authors.

Table 4. Review of adsorption capacity of biochars from literature

Metal	Adsorption capacity (mg/g)	Adsorption pH	Biochar feedstock	References
Cd	1.5	5	Alamo switch grass	Regmi et al. 2012
Cu	4	5		
Cd	16.6	6		
Cu	6.3	5	Pig manure	Kolodynska et al. 2012
Pb	19.8	6		
Zn	4.2	5		
Pb	4.1	5	pinewood residues	Liu and Zhang 2009
Pb	2.4	5	rice husk residues	
Cr (VI)	3.0	2	Oak wood	Mohan et al. 2011
Cr (VI)	4.6	2	Oak bark	
Cu	0.04	5	peanut straw	Tong et al. 2011
Cu	0.09	5	canola straw	
Cu	12.5	5	corn straw	
Zn	11	5	corn straw	Chen et al. 2011
Cu	6.8	5	Hardwood	
Zn	4.5	5	Hardwood	
Cu	48.5	6	Salt-marsh plant	Li et al. 2013

Three different biochars, poplar wood chips, spruce wood chips and spruce branch mulch were studied as metal adsorbents in this study.

## MATERIALS AND METHODS

### Adsorbents Sampling and Preparation

Poplar and spruce trees were cut down in the Whitehorse region, Yukon Territory, Canada. Branches were removed from the tree before the trunks were ground into chips using a log chipper (Bandit M65 XP, USA). Spruce branches were ground separately into mulch using the same equipment. Wood chips and mulch were used fresh, with less than a week of drying.

Three biochars were collected from different manufacturers. Biochar made from mixed spruce, pine, and fir was produced by Diacarbon Energy Inc. (Burnaby, BC, Canada) and named “BCD”. Biochar made of

spruce, pine, fir, willow and poplar was produced by Zakus Farms (“BCZ”). The biochar collected from Titan (Saskatoon, SK, Canada) was made from Willow and fish bone meal (“BCT”).

#### Adsorbents pH Measurements

Suspensions were made using 1:10 (w/w) ratio of biochar or wood with DI water. The pH of the suspension was measured at  $t=0$  ( $\text{pH}_{t=0}$ ) and after a week ( $\text{pH}_{1 \text{ week}}$ ) at room temperature using a pH meter (Oakton pH5+, Vernon Hills, IL, USA) equipped with Ag/AgCl combination reference electrodes. pH calibration was done using certified pH 4, pH 7 and pH 10 standards (Fisher, catalogue number SB101-500, SB107-500 and B115-500).

#### Batch Adsorption Studies

Synthetic drainage effluent was produced using sulfate metal salts ( $\text{As}_2\text{O}_5$ ,  $\text{CdSO}_4 \cdot 8/3\text{H}_2\text{O}$ ,  $\text{CuSO}_4 \cdot 5\text{H}_2\text{O}$ ,  $\text{FeSO}_4 \cdot 7\text{H}_2\text{O}$ ,  $\text{SeO}_2$ ,  $\text{ZnSO}_4 \cdot 7\text{H}_2\text{O}$  and  $\text{NaSO}_4 \cdot 10\text{H}_2\text{O}$ , all ACS reagents) dissolved in DI water at pH 6. Then 2, 4, 6, 8 and 10 g of adsorbent materials were mixed with 200 ml of synthetic drainage effluent in a 500ml baffled Erlen Meyer and shaken for 24 hours at room temperature to allow for metal sorption equilibrium. To assess metal leaching from the materials, 10g of adsorbent was mixed with DI in the same conditions. Supernatant was then filtered through 0.45 $\mu\text{m}$  porosity glass fiber filters (Cole Parmer, catalogue number RW03-04700) and stored for further analysis.

#### Analytical Techniques

Effluent pH was measured (Oakton pH5+, Vernon Hills, IL, USA with Ag/AgCl combination reference electrodes). Total Solids contents were measured according to APHA method 2540B. Biochar and wood products were partially digested using ACS grade nitric acid and hydrogen peroxide (method USEPA 3050b) to allow for determination of metal contents. Metal concentrations were measured using Inductively Coupled Plasma-Optical Emission Spectroscopy (ICP-OES), Vista-AX CCO, by Varian (Palo Alto, CA, USA). Quality controls were performed with certified multiple element standards from SCP Science (Lasalle, QC, Canada) to ensure conformity of the measurement apparatus. Limit of Quantification (LQ) was calculated as 10 times the standard deviation measured obtained after measurement of 10 blanks.

## **RESULTS AND DISCUSSION**

#### Material Characteristics

The material studied includes three biochars (BCD, BCZ and BCT) and three wood products (poplar chips, spruce chips and spruce needles). Table 2 presents the results of characterization. As expected, biochars displayed alkaline pH, initially between 9 and 10 and reducing down to close to 8.5 after a week. On the other hand, the wood products were acidic, with the poplar chips producing the most acidic conditions after a week, at pH 3.84. Arsenic and selenium contents in all materials were low, under the quantification limits of 0.9 mg/kg for As and 2.1 mg/kg for Se, except the biochar made of willow and bone meal (BCT) at  $6.3 \pm 0.7$  mg/L Se. Overall, the BCT material, made of willow and bone meal, displayed higher concentrations of metals, including significant amount of Cd, Zn, Fe and Na. In general, higher metal contents were measured in biochars than in wood products. Biochars were made by

pyrolysis, which involved volume reduction and subsequent concentration of the metals in the residual product.

Table 5. Measured adsorbent characteristics (1:10 water suspension was used for pH measurements;  $\text{HNO}_3/\text{H}_2\text{O}_2$  digestion was used for metal contents analysis)

Material	Total solids	$\text{pH}_{t=0}$	$\text{pH}_{1\text{week}}$	As	Cd	Cu	Fe	Na	Se	Zn
	%			mg/kg	mg/kg	mg/kg	mg/kg	mg/kg	mg/kg	mg/kg
BCT	81.0	9.84	8.27	<0.9	11.0	3.3	3755.8	15814.5	6.3	164.2
BCD	81.1	9.91	8.51	<0.9	0.8	26	1362.3	1281.0	<2.1	55.8
BCZ	96.5	9.23	8.47	<0.9	0.2	15.2	939.1	123.0	<2.1	60.0
Pop. chips	93.7	6.06	3.84	<0.9	0.2	30.8	32.6	53.3	<2.1	30.0
Sp. chips	93.6	5.94	5.5	<0.9	2.0	67.9	54.5	111.4	<2.1	27.0
Sp. needles	89.9	5.28	5.11	<0.9	2.4	22.9	110.1	124.8	<2.1	51.1

#### Metal Leaching

Wood products and biochars contained heavy metals to some extent. Mixing of the materials with DI water for 24 hours was completed to assess the potential for metal leaching. The results are presented in Figure 1 along with the concentration measured in the synthetic drainage water for comparison. Wood products leached out more metals than biochar products, even if metals contents were generally lower (Table 2). The metals contained in pyrolysis products may be tightly bound and less available for leaching. Poplar chips and spruce needle leached significant amount of copper and zinc in the first 24 hours of being submerged in water, with concentrations 0.13 and 0.12 mg Cu/L and 0.13 and 0.17 mg Zn/L respectively using 5% S/L ratio. No selenium leaching was observed (< LQ of 0.021 mg/L) and arsenic leaching was observed only for BCT (0.012 mg As/L, otherwise < LQ of 0.0093 mg/L). Hence, the use of natural materials such as wood, in bioreactors should be managed carefully, with special attention to metal leaching potential in the initial operation period.

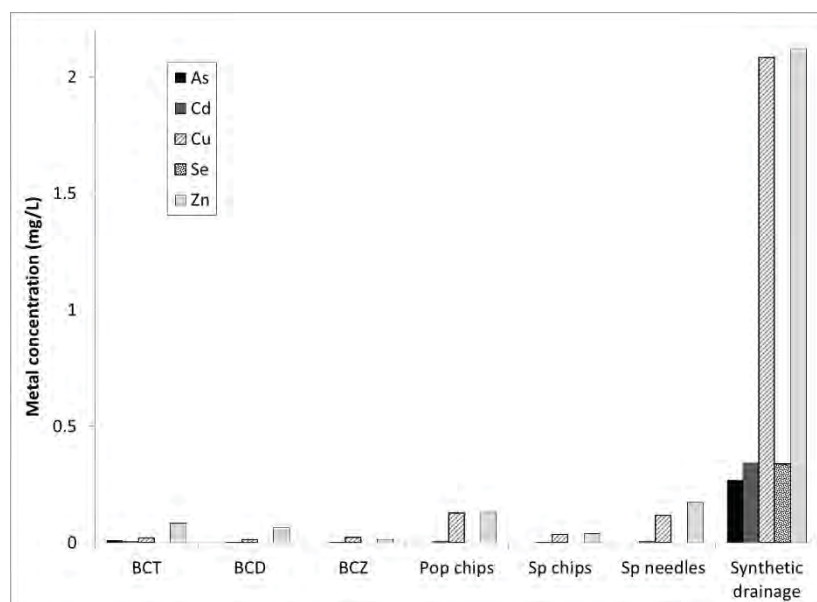


Figure 4. As, Cd, Cu, Se and Zn concentration observed after leaching from biochars BCT, BCD, BCZ, poplar chips, spruce chips and spruce needles and in the prepared synthetic drainage water (Solid to liquid ratio of 5% in DI water, 24 hours equilibrium, LQ are 0.009 mg/L for As)

### Metal Adsorption

The primary objective of this study was to assess the sorption capacity of materials which can be collected or produced on-site in many northern and especially Yukon mines, to help with metal sequestration. Three biochars and three wood products were mixed with pH 6 synthetic drainage water containing metals commonly found in mine impacted waters, namely As, Cd, Cu, Se and Zn. Figure 2 presents the relative concentration ( $C/C_0$ ) of the different metals remaining in the effluent after exposure to each of the adsorbents for 24 hours. Biochars results (BCT, BCD and BCZ) are displayed in Figure 2a, b and c. The profiles are very similar for Cd, Cu and Zn, with more than 90% removal on average using 1% to 5% S/L ratio. Arsenic removal was lower, with 54, 69 and 35% respectively using BCT, BCD and BCZ. The selenium profiles were somewhat surprising. The three biochars studied were not able to remove more than 30% of selenium and the Biochar BCZ actually released selenium to a significant extent. Although 10 g of BCZ leached less than 2  $\mu\text{g}$  of Se in DI water, when mixed with synthetic drainage the same amount of biochar released more than 80  $\mu\text{g}$  of Se. Selenium initially bound to the biochars may have been displaced through an exchange process during sorption of other metals with higher affinities like Fe, Na, Zn, Cu, Cd on the biochar. The mechanisms of selenium release should be further studied.

Divalent metal removal by wood products was reasonably effective. Although not as efficient as biochar, poplar, spruce chips and spruce needles were able to remove Cd up to 87, 94 and 84% respectively, Cu up to 76, 81 and 66% respectively and Zn up to 83, 88 and 51% respectively. The spruce chips obtained from trunks displayed higher ability than the needles for metal removal. This difference may be due to the



different structure, porosity, and surface chemistry of the needles versus the trunk chips. Amongst the three wood products, Spruce chips gave the best results.

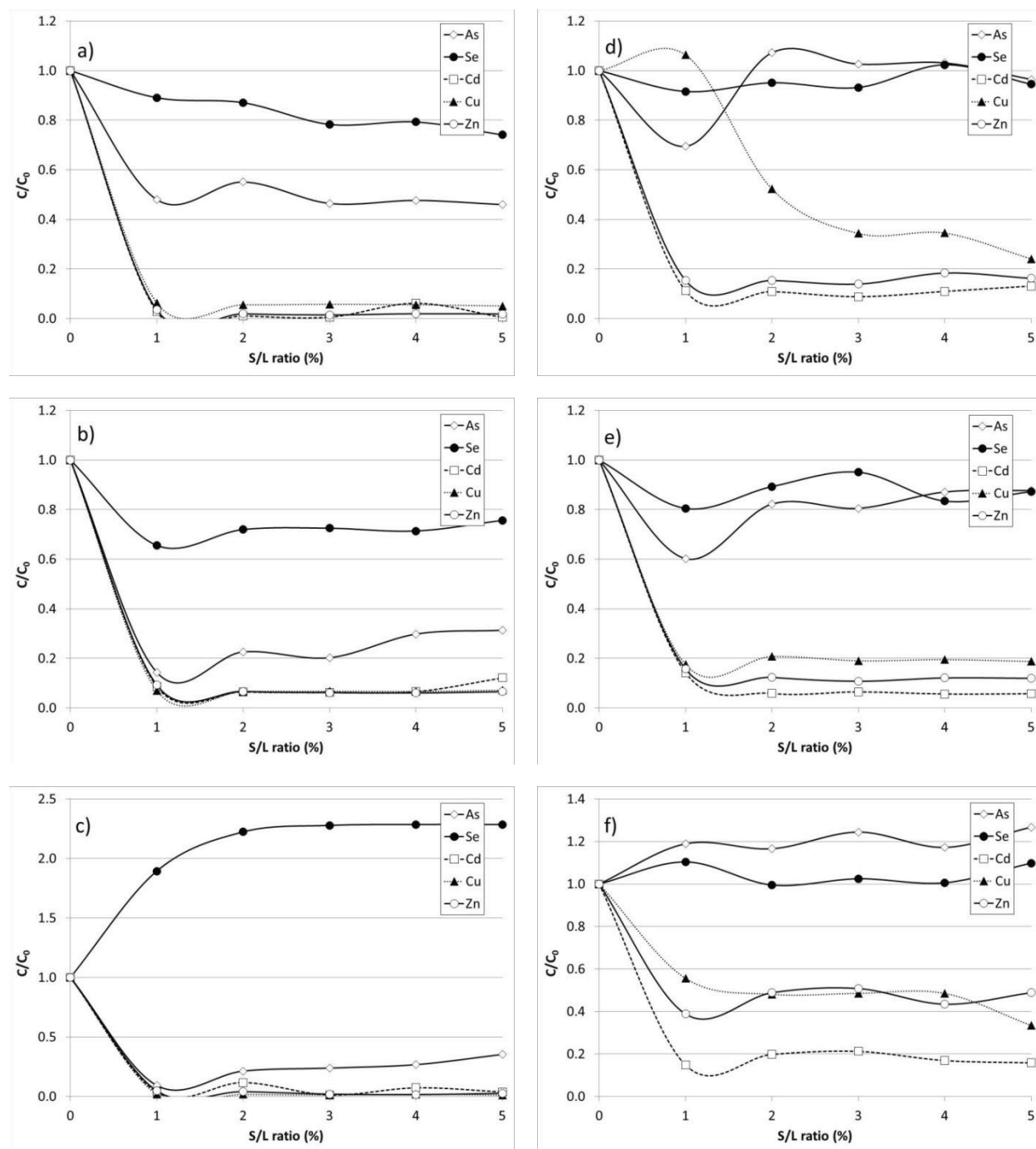


Figure 5. Relative concentrations ( $C/C_0$ ) of As, Se, Cd, Cu and Zn after 24 hours equilibrium with variable solid to liquid ratio using a) BCT, b) BCD, c) BCZ, d) poplar chips, e) spruce chips and f) spruce needles (initial concentrations of 0.27 mg As/L, 0.34 mg Cd/L, 2.08 mg Cu/L, 0.34 mg Se/L and 2.12 mg Zn/L).

## CONCLUSION

Natural wood products and biochars were studied for metal removal from a synthetic drainage effluent. Biochars exhibited alkaline properties whereas wood products generated acidity however, both materials displayed good capacity for divalent metal removal like Cd, Cu and Zn although biochars were slightly more efficient than wood products. As and Se were less amenable to adsorptive removal than divalent metals but biochars helped to remove arsenic to some extent. Overall, this study gave evidence of the potential of wood products and biochars for water treatment and metal sequestration, providing that metal leaching from the material itself is controlled. Further study should investigate the effect of using such materials on sulfate-reducing bacteria growth and bioreactor efficiency, and these tests are planned using some of the same media as was tested in this study.

## REFERENCES

- Akcil, A. and S. Koldas. 2006. Acid Mine Drainage (AMD): causes, treatment and case studies. *Journal of Cleaner Production* 14: 1139-1145.
- Argun, M.E., S. Dursun, C. Ozdemir and M. Karatas. 2008. Heavy metal adsorption by modified oak sawdust: Thermodynamics and kinetics. *Journal of Hazardous Materials* 141: 77-85.
- Blais, J.F., Z. Djedidi, R.B. Cheikh, R.D. Tyagi and G. Mercier. 2008. Metals precipitation from effluents. A review. *Practice Periodical of Hazardous, Toxic and Radioactive Waste Management* 12(3): 135-49.
- Chen, X., G. Chen, L. Chen, Y. Chen, J. Lehmann, M.B. McBride and A.G. Hay. 2011. Adsorption of copper and zinc by biochars produced from pyrolysis of hardwood and corn straw in aqueous solution. *Bioresource Technology* 102: 8877-8884.
- Dar, S.A., A.J.M. Stams, J.G. Kuenen and G. Muyzer. 2007. Co-existence of physiologically similar sulfate-reducing bacteria in a full-scale sulfidogenic bioreactor fed with a single organic electron donor. *Applied Microbiology and Biotechnology* 75: 1463-1472.
- Drury, W.J. 2006. Modeling of sulfate reduction in anaerobic solid substrate bioreactors for mine drainage treatment. *Mine Water and the Environment* 19(1): 19-29.
- Genty, T., B. Bussière, C.M. Neculita, M. Benzaazoua and G.J. Zagury. 2011. Passive treatment of acid mine drainage: Repeatability for sulphate reducing passive bioreactor column efficiency testing. IN: International Mine Water Association, September 4-11, 2011, Aachen, Germany.
- Jong, T. and D.L. Parry. 2003. Removal of sulfate and heavy metals by sulfate reducing bacteria in short-term bench scale upflow anaerobic packed bed reactor runs. *Water Research* 37: 3379-3389.



Johnson, D.B. and K.B. Hallberg. 2005. Acid mine drainage remediation options: A review. *Science of the Total Environment* 338: 3-14.

Kalin, M., A. Fyson and W.N. Wheeler. 2006. Review - The chemistry of conventional and alternative treatment systems for the neutralization of acid mine drainage. *Science of the Total Environment* 366: 395-408.

Keng, P.S., S.L. Lee, S.T. Ha, Y.T. Hung and S.T. Ong. 2013. Removal of hazardous heavy metals from aqueous environment by low-cost adsorption materials. *Environmental Chemistry Letters* (Article in Press).

Kolodynska D., R. Wnetrzak, J.J. Leahy, M.H.B. Hayes, W. Kwapinski and Z. Hubicki. 2012. Kinetic and adsorptive characterization of biochar in metal ions removal. *Chemical Engineering Journal* 197: 95-305.

Lehman, J. and S. Joseph. 2009. Biochar for environmental management: an introduction. IN: *Biochar for Environmental Management: Science and Technology*, Earthscan publication, ISBN: 978-1-84407-658-1. p. 1-12.

Li, M., Q. Liu, L. Guo, Y. Zhang, Z. Lou, Y. Wang and G. Qian. 2013. Cu(II) removal from aqueous solution by *Spartina alterniflora* derived biochar. *Bioresource Technology* 141: 83-88.

Liu, Z. and F.S. Zhang. 2009. Removal of lead from water using biochars prepared from hydrothermal liquefaction of biomass. *Journal of Hazardous Materials* 167: 933-939.

McCauley, C.A., A.D. O'Sullivan, M.W. Milke and P.A. Weber. 2009. Sulfate and metal removal in bioreactors treating acid mine drainage dominated with iron and aluminum. *Water Research* 43: 961- 970.

Mohana, D., S. Rajput, V.K. Singh, P.H. Steele and C.U. Pittman Jr. 2011. Modeling and evaluation of chromium remediation from water using low cost bio-char, a green adsorbent. *Journal of Hazardous Materials* 188: 319-333.

Neculita, C.M. and G.J. Zagury. 2008. Biological treatment of highly contaminated acid mine drainage in batch reactors: Long-term treatment and reactive mixture characterization. *Journal of Hazardous Materials* 157: 358-366.

Neculita, C.M., G.J. Zagury and V. Kulnieks. 2010. Short-Term And Long-Term Bioreactors For Acid Mine Drainage Treatment. IN: *Proceedings of the Annual International Conference on Soils, Sediments, Water and Energy* 12 (1) article 2.

Nordin, K. 2010. Evaluation of the Effectiveness of Biological Treatment of Mine Waters. MPERG report 2010-4.

O'Connell, D.W., C. Birkinshaw and T.F. O'Dwyer. 2008. Heavy metal adsorbents prepared from the modification of cellulose: A review. *Bioresource Technology* 99: 6709-6724.

Regmi, P., J.L. Garcia Moscoso, S. Kumar, X. Cao, J. Maob and G. Schafran. 2012. Removal of copper and cadmium from aqueous solution using switchgrass biochar produced via hydrothermal carbonization process. *Journal of Environmental Management* 109: 61-69.

Tong, Z.J., J. Li, J. Yuana and R. Xua. 2011. Adsorption of Cu(II) by biochars generated from three crop straws. *Chemical Engineering Journal* 172: 828-834.

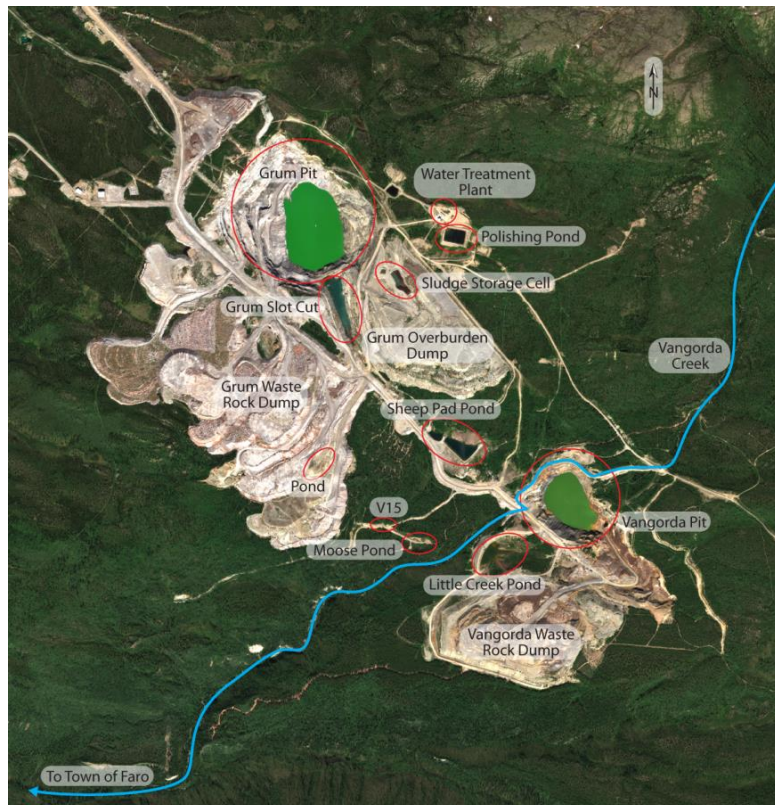
USEPA. 2002. Final report – Sulfate-reducing bacteria reactive wall demonstration. Report EPA/600/R02/053.

Waybrant, K.R., D.W. Blowes and C.J. Ptacek. 1998. Selection of Reactive Mixtures for Use in Permeable Reactive Walls for Treatment of Mine Drainage. *Environmental Science and Technology* 32: 1972-1979.

# Overcoming Northern Challenges

Proceedings of the 2013 Northern Latitudes Mining Reclamation Workshop and  
38<sup>th</sup> Annual Meeting of the Canadian Land Reclamation Association

Whitehorse, Yukon September 9 – 12, 2013



## Table of Contents By Presentation Schedule

Northern Latitudes Mining Reclamation Workshop	iv
Canadian Land Reclamation Association	iv
Acknowledgements	v
Citation	v
Conference Sponsors	vi
PAPERS 1	

<b>Tuesday(Below)</b>	<b>Go To Wednesday</b>
Ayres, O'Kane,Hiller,Helps	Performance of an Engineered Cover
Bromley	Innovative Concepts used during Remediation and Reclamation Planning of a Sulphur Handling Facility
Stewart, Karpenin, and Siciliano	Northern Biochar for Northern Remediation and Restoration
Petelina	Biochar application for revegetation purposes in Northern Saskatchewan
Chang	Bioremediation in Northern Climates
Geddes	Management of Canada's Radium and Uranium Mining Legacies on the Historic Northern Transportation Route
Hewitt, McPherson and Tokarek	Bioengineering Techniques for Re-vegetation of Riparian Areas at Colomac Mine, Northwest Territories
Bossy, Kwong, Beauchemin, Thibault	Potential As <sub>2</sub> O <sub>3</sub> Dust conversion at Giant Mine (paper not included)
Waddell, Spiller and Davison,	The use of ChemOx to overcome the challenges of PHC contaminated soil and groundwater at contaminated sites
Douheret,	Physico-Chemical treatment with Geotube® filtration: Underground Mine Desludging in winter TTS, Iron (Fe) and Zinc treatment
Coulombe, Cote, Paridis, Straub	Field Assessment of Sulphide Oxidation Rate - Raglan Mine
Smirnova et al	Results of vegetation survey as a part of neutralizing lime sludge valorization assessment
Baker, Humbert, Boyd	Dominion Gurney Minesite Rehabilitation (paper not included)
Martínez, Borstad, Brown, Ersahin, Henley	Remote sensing in reclamation monitoring: What can it do for you?

**Wednesday:**

Eary, Russell, Johnson,  
Davidson and Harrington

Knight

Polster

Dustin

Kempenaar, Marques  
and McClure

Smreciu, Gould, and  
Wood

Keefer

Pedlar-Hobbs, Ludgate and  
Luchinski

Chang, et.al

Heck

Janin

Stewart and Siciliano

Nadeau and Huggard

Simpson

**Back To Tuesday**

Water Quality Modelling and Development of Receiving  
Environment Water Quality Objectives for the Closure Planning  
in the Keno Hill Silver District (paper not attached)

Galena Hill, Yukon, Ecosystem Mapping Project

Natural Processes: An Effective Model For Mine Reclamation

Implementation of contaminated water management system  
upgrades to allow for dewatering of two open pits at the Vangorda  
Plateau, Faro Mine Complex, Yukon

Tools for Arctic Revegetation: What's in Your Toolbox?

Establishment of Native Boearl Plant Species On Reclaimed Oil Sands  
Mining Disturbances

Twin Sisters Native Plant Nursery

Key Factors in Developing and Implementing a Successful  
Reclamation Plan

Effects of Soil Aggregates Sizes (paper not attached)

Phytoremediation of petroleum hydrocarbon impacted soils at a  
remote abandoned exploration wellsite in the Sahtu Region,  
Northwest Territories

Passive treatment of drainage waters: Promoting metals sorption  
to enhance metal removal efficiency

Biological Soil Crusts and Native Species for Northern Mine Site  
Restoration

Restoration Planning and Application of Ecological Succession Principals

Defining Disturbance and Recovery - the influence of landscape  
specific ecological responses to oil and gas linear disturbances in  
Yukon

POSTERS	244
Practical Field Uses of Remote Sensing	245
Michael Henley <sup>1</sup> , Gary Borstad <sup>1</sup> , Dave Polster <sup>2</sup> , Mar Martinez <sup>1</sup> , Leslie Brown <sup>1</sup> and Eduardo Loos <sup>1</sup>	
Project Case Study – Composite Soil Cover for Sulphide Tailings at Mine Site in Northeastern Ontario, Canada	246
Bruno Herlin, P.Eng.	
Assessment of Sawmill Waste Biochars for the Purpose of Heavy Metal Remediation	255
Tyler Jamieson, Eric Sager and Celine Gueguen	
Determination of Optimal Substrate to Maximize the Revegetation of Cover With Capillary Barrier Effects	256
Sarah Lamothe <sup>1</sup> , Francine Tremblay <sup>2</sup> , Robin Potvin <sup>3</sup> and Evgeniya Smirnova <sup>4</sup>	
Oil Sands Research and Information Network: Creating and Sharing Knowledge to Support Environmental Management of the Mineable Oil Sands	257
C.B. Powter	
Mineralogical and Geochemical Controls on Metal Sequestration in the Keno Hill Silver District	262
Barbara Sherriff <sup>1</sup> , Andrew Gault <sup>2</sup> , Heather Jamieson <sup>2</sup> , Brent Johnson <sup>3</sup> , Scott Davidson <sup>4</sup> and Jim Harrington <sup>5</sup>	
Oil Sands Vegetation Cooperative – A Coordinated Effort to Harvest and Bank Seeds for Reclamation in Northeastern Alberta	263
Ann Smreciu and Kimberly Gould	
Ratroot ( <i>Acorus americanus</i> ) Propagation and Establishment on Created Wetlands in the Oil Sands Region of Alberta	264
Ann Smreciu, Stephanie Wood and Kimberly Gould	



## **NORTHERN LATITUDES MINING RECLAMATION WORKSHOP**

The Northern Latitudes Mining Reclamation Workshop is an international workshop on mining, land and urban reclamation and restoration methods. The objective of the workshop is to share information and experiences among governments, industry, consultants, Alaska Natives, northern First Nations and Inuit groups which undertake reclamation and restoration projects, or are involved in land management in the north or in comparable environments.

The first Workshop was held in Whitehorse, Yukon Territory, Canada in 2001 and it has been held every two years since, alternating between Canada and Alaska. The primary sponsors of the Workshop include the Yukon Geological Survey, Indian and Northern Affairs Canada, Natural Resources Canada, US Department of the Interior Bureau of Land Management, and the State of Alaska Department of Natural Resources.

## **CANADIAN LAND RECLAMATION ASSOCIATION**

The CLRA/ACRSD is a non-profit organization incorporated in Canada with corresponding members throughout North America and other countries. The main objectives of CLRA/ACRSD are:

- To further knowledge and encourage investigation of problems and solutions in land reclamation.
- To provide opportunities for those interested in and concerned with land reclamation to meet and exchange information, ideas and experience.
- To incorporate the advances from research and practical experience into land reclamation planning and practice.
- To collect information relating to land reclamation and publish periodicals, books and leaflets which the Association may think desirable.
- To encourage education in the field of land reclamation.
- To provide awards for noteworthy achievements in the field of land reclamation.

## **ACKNOWLEDGEMENTS**

The sponsoring organizations wish to acknowledge the work and support of all the people who made this conference a success, including:

- The Conference Organizing Committee: Alissa Sampson, Andrea Granger, Bill Price, David Polster, Diane Lister, Justin Ireys, Linda Jones, Mike Muller, Neil Salvin and Samantha Hudson.
- The Conference Papers and Posters Committee: Andy Etmanski, Bill Price, Chris Powter, David Polster, Diane Lister and Scott Davidson
- The Conference Sponsors (see next page)
- The Conference paper and poster presenters
- Dustin Rainey, Jocelyn Douheret and Brian Geddes for permission to use their photos on the Cover, Papers and Posters pages, respectively

## **CITATION**

This report may be cited as:

Polster, D.F. and C.B. Powter (Compilers), 2013. Overcoming Northern Challenges. Proceedings of the 2013 Northern Latitudes Mining Reclamation Workshop and 38th Annual Meeting of the Canadian Land Reclamation Association. Whitehorse, Yukon September 9 – 12, 2013. 264 pp.