

REMOTE SENSING IN VEGETATION MONITORING: MORE THAN JUST A PRETTY PICTURE

Mar Martínez, Gary Borstad, Leslie Brown, Kaan Ersahin and Michael Henley

ASL Environmental Sciences Inc.
#1-6703 Rajpur Place
Victoria, BC V8M 1Z5

ABSTRACT

Monitoring of reclaimed sites is a complex, interdisciplinary undertaking, especially in large, disturbed areas with difficult access. In that context, remote sensing is a unique and valuable tool that provides a synoptic view of an entire reclamation program and its progress over time, extending the more detailed but sparsely distributed *in situ* monitoring. Using remote sensing data, we are creating reclamation maps that provide easily understood information about a site's vegetation history, and whether or not it has reached and maintained biomass above the permit threshold for self-sustaining status. These maps are produced at various scales, are Geographic Information Systems (GIS) compatible, and often provide data for remote, inaccessible locations or for locations where historical data are missing. Reclamation maps are designed to help decision-makers focus remediation efforts on specific locations most needing it, rather than making unnecessary and potentially costly wholesale changes to entire sites. The maps are useful, not only in reclamation and multidisciplinary studies, but also in public demonstration of industry's successful reclamation practices. As climate in the north continues to change, and resource exploration and extraction activities increase, mapping the changing landscape becomes key for the conservation and sustainable management of resources. In this paper, we present two examples of long-term remote sensing monitoring at reclaimed mine sites in British Columbia and one of long-term vegetation changes in the Northwest Territories. Other applications of remote sensing are also discussed, such as the generation of habitat maps for wetland monitoring at reclaimed tailings ponds in support of wildlife habitat or biodiversity studies. Examples of field applications of remote sensing will be presented in a companion poster entitled "Practical field uses of remote sensing."

Key Words: Mine Reclamation, NDVI, Change Detection, Vegetation Trends, Habitat Mapping.

INTRODUCTION

Reclamation is a central part of the decommissioning of mining operations, and requires monitoring of re-vegetated areas to assess the progress toward the end land use objectives, as well as to determine whether individual sites have achieved a self-sustaining state. Traditional *in situ* monitoring programs provide very detailed information on selected sampling sites, but ground-based surveying of entire reclaimed areas and hard-to-reach sites can prove to be a difficult, many times impossible, task.

Remote sensing, whether from aircraft or satellites, is a practical tool that provides continuous maps of vegetation changes over time for entire mine sites, supplementing the more detailed but less synoptic ground biological surveys. It provides a means to focus remediation efforts on specific locations that need it most, instead of making wholesale changes to entire sites (Borstad et al. 2005; Martínez et al. 2012; Richards et al. 2003), and is also a valuable tool for monitoring and quantifying a wide array of

biophysical changes attributed to climate change in northern ecoregions (Borstad et al. 2008; Laidler et al. 2008).

METHODS

Remote Sensing Data

The high spatial resolution, together with the flexibility of spectral configuration and acquisition timing characteristic of airborne systems, make them ideal for reclamation monitoring (Borstad et al. 2005). Recently satellites have seen improvements in spatial resolution in particular that make them a less expensive alternative; however this reduction in cost comes at a significantly increased risk, since satellite surveys are more affected by cloud than those from aircraft that can be more readily adapted to avoid or operate under cloud (Borstad et al. 2005).

In this paper we present examples of data obtained with the Compact Airborne Spectrographic Imager (CASI) configured to acquire imagery in 9 spectral bands at 2.5 m spatial resolution (Borstad et al. 2005; Brown et al. 2006; Martínez et al. 2011; Richards et al. 2003), as well as from satellites such as Landsat, and QuickBird2 (QB2) and WorldView-2 (WV2) (Digital Globe 2012). The free data from the Landsat series, launched in 1972 and extended with the successful launch of Landsat 8 in 2013, provides consistent global coverage (GLOVIS 2013). WV2 and QB2, launched in 2009 and 2011 respectively, provide higher spatial and spectral resolution than the Landsat series; however they are not free, and must be specifically tasked to acquire imagery over any particular target. Their short historical catalogue makes them less useful for long-term analyses, but their higher spatial resolution makes them better suited to study smaller areas in more detail.

Land Vegetation Indices

For land vegetation studies we use two vegetation indices derived from reflectance data for both airborne and satellite imagery (Table 1). The Normalized Difference Vegetation Index (NDVI) is commonly used in remote sensing as an index that provides a measure of green vegetative cover or biomass (Peñuelas and Filella 1998; Tucker 1979). Our 'Normalized Yellow Index' (NYI) provides an index of desiccation and/or senescence (Borstad Associates 2006).

Table 6. Calculation of vegetation indices and interpretation.

Index	Formula	Interpretation
NDVI	$(\text{Infrared} - \text{Red}) / (\text{Infrared} + \text{Red})$	< 0 unvegetated, > 0 vegetated (1 maximum)
NYI	$(\text{Green} - \text{Red}) / (\text{Green} + \text{Red})$	< 0 dry or senescent, > 0 green sparse to dense (1 maximum)

NDVI is a measure of plant chlorophyll. Red reflectance (near 660 nm) from healthy green vegetation is low because of light absorption by photosynthetic pigments, mainly chlorophylls, whereas a plant's spongy mesophyll leaf structure creates considerable reflectance in the near infrared region of the spectrum. NDVI can be calibrated to apparent biomass, as shown in Figure 1, but NDVI plateaus at high biomass values (Figure 6), and it can also be affected by disease, flowering, and water availability (Carter

and Knapp 2001; Wang et al. 2001; Yin and Williams 1997). We developed the Normalized Yellow Index (NYI) to assist differentiating the low NDVI values caused by chlorophyll degradation from those caused by moderate or sparsely vegetated green areas (Borstad Associates 2006). As plants lose chlorophyll, red reflectance (near 660 nm) values increase, thus NYI compares spectral bands in the green (560 nm) and the red wavelengths, having positive values for dense green vegetation, and negative values for yellowish vegetation.

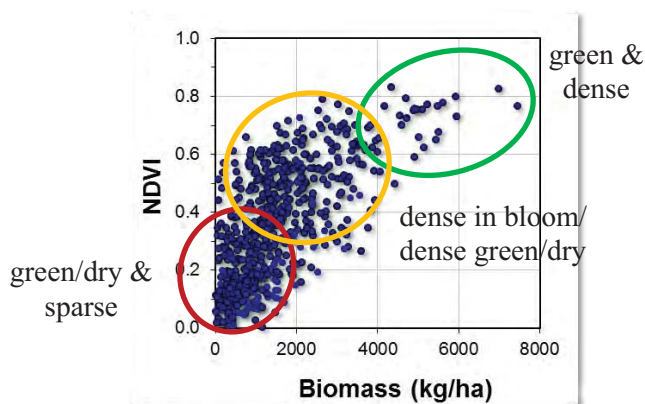


Figure 6. NDVI calibration to apparent biomass.

Multi-temporal Analysis

To assess vegetation changes over time, we build time series datasets using the annual NDVI images, and classify them using an unsupervised algorithm (ISODATA), which groups similar NDVI histories into up to 255 statistical classes. Pixels with similar trends are then grouped manually (Borstad et al. 2009; Martinez et al. 2012) to create maps of reclamation status (see Figure 2). As described above, NYI data are used to assist to interpret low NDVI values, as are photographs and visual observations when available.

Another way that we use NDVI time series is to assess long-term trends in vegetation, such as those associated with climate change. Changes of this nature are evaluated using regressions of NDVI versus year (see Figure 3). The images of r^2 and slope allow us to map the rate and direction of change and its level of statistical significance. Maps of regression slope clearly delimit regions of positive and negative change as well as their magnitude, facilitating interpretation of the underlying factors, as well as permitting the calculation of such statistics as area of habitat loss. It is important in any vegetation monitoring program to understand the long-term context within which reclamation efforts are conducted.

Mapping Aquatic Habitat

Different habitat types can be characterized from remote sensing imagery based on the optical properties of the vegetation types present (communities or species), as well as the non-biological components. These optical properties need to be considered when selecting the remote sensing data type, processes and techniques. Aquatic habitat mapping presents a special case, as the vegetation has unique spectral properties due to the modulating effect of water. For this reason airborne sensors, with their flexible spectral configurations, are often used for aquatic applications. Specific bandsets can be used to extract

information for aquatic vegetation and water quality parameters such as turbidity, and phytoplankton blooms.

The techniques used for aquatic mapping differ somewhat from terrestrial applications because of the unique spectral properties of the vegetation. For example, instead of NDVI used for terrestrial vegetation, for aquatic vegetation we use an index referred to as Shifted Red Peak Height (SRPH). Like NDVI, this index measures the height of the near infrared reflectance near 700 nm that occurs in spectra of all multicellular plants. In aquatic environments, where longer wavelengths are strongly attenuated by water, this near infrared “plateau” becomes a “red peak” when vegetation is covered by water, thus providing an unambiguous indication of aquatic vegetation (see Figure 4A2).

EXAMPLES

Long-Term Changes at Reclaimed Mine Sites

We have been monitoring reclaimed areas at a large copper mine using aerial remote sensing since 2001. The time series has permitted a variety of analyses that are being used in the management of the reclamation program. The trends in annual NDVI (Figure 2) and apparent biomass demonstrate the history of the reclamation at each site, and more importantly, clearly delimit the extents of areas that have reached a biomass above 1500 kg/ha (‘Rapid growth’; green in the reclamation map), the accepted reclamation threshold in this case. The analyses also show which areas considered successfully reclaimed are subject to desiccation (shown in yellow) and those requiring additional intervention (‘Limited cover’ shown in red).

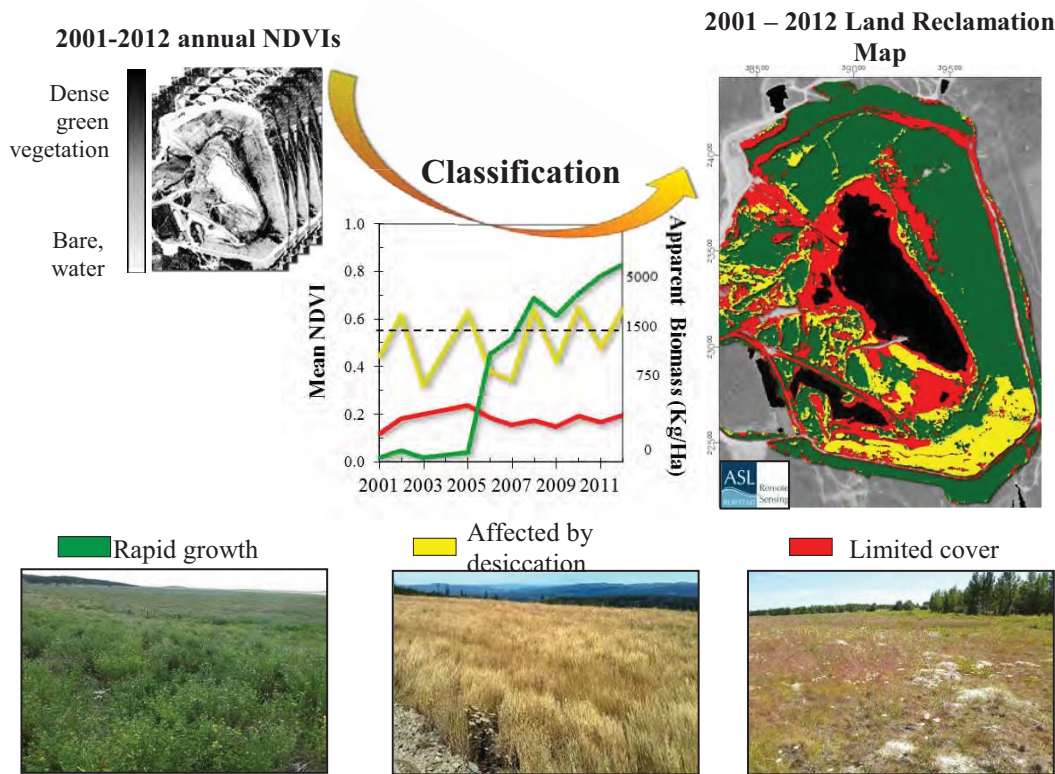


Figure 7. Reclamation map and 2001-2012 vegetation trends at a reclaimed mine site.

Vegetation Trends at Anderson River Delta, NWT

The primary objectives of this study (Figure 3A) were to quantify reports of habitat loss in the Anderson River Delta and identify areas that had been impacted. Analysis of four large regions of interest (ROIs) showed that the largest reductions in vegetation cover occurred in the Outer Islands between 1972 and 2003 (Figure 3B), with an NDVI decline of 38% during the study period, corresponding primarily to areas most heavily used by nesting Lesser Snow Geese and Black Brant (Armstrong 1995; Kerbes et al. 1999).

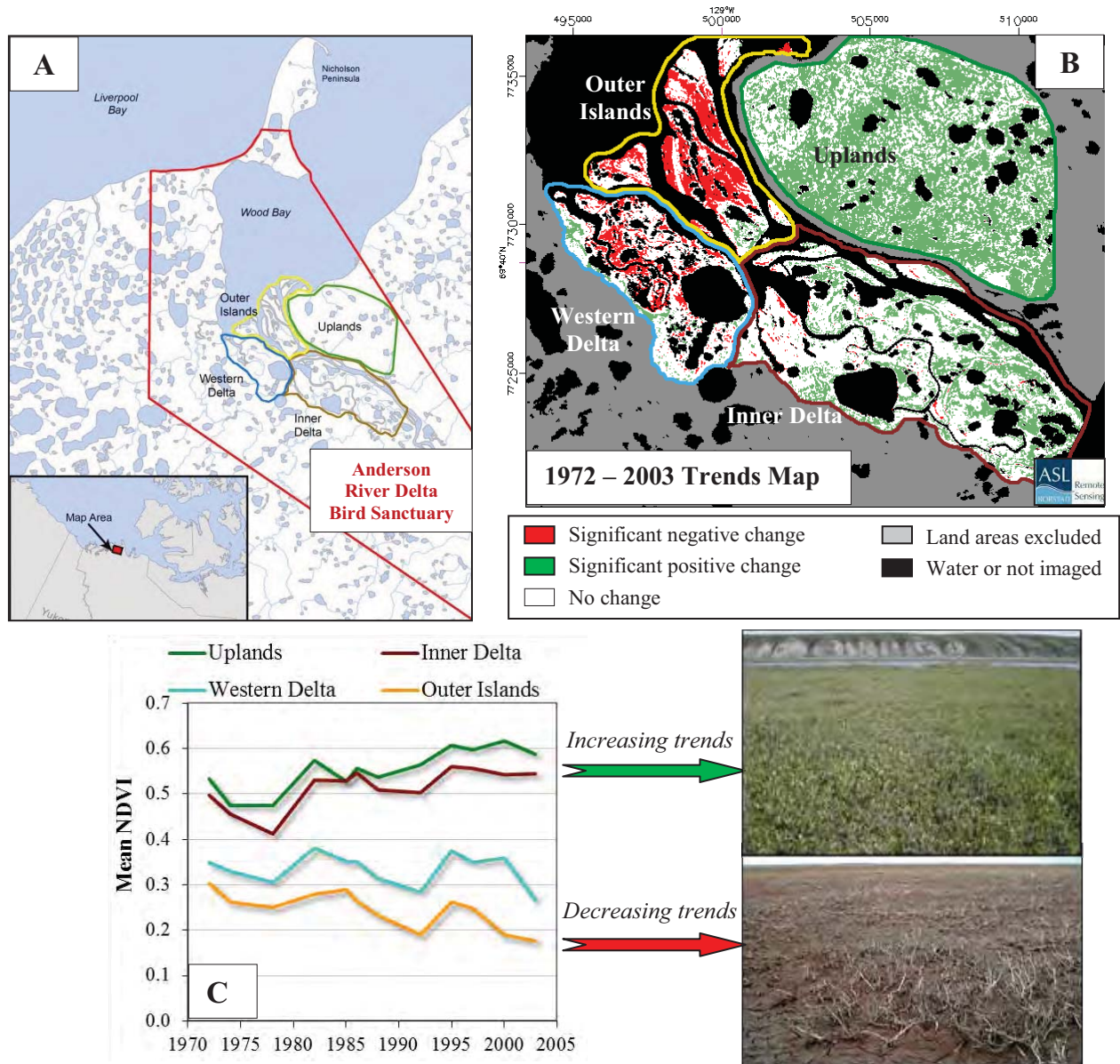


Figure 8. Vegetation changes over 31 years in four regions of interest (ROIs) in the Anderson River Delta.

The Western Delta ROI showed a 12% decline in vegetation over the study period, while further inland, the Inner Delta showed little vegetation loss. The Uplands had a statistically significant increase in NDVI over time, which agreed well with results from other studies in North America and Eurasia for the same

time period (Jia et al. 2003; Jiang et al. 2011; Verbyla 2008; Walker et al. 2012). The changes seen in the satellite time series were confirmed by qualitative reports (Armstrong 1995; Barry 1967).

Mapping Wetland Habitat

Tailings ponds can be converted to functional wetlands once water levels are stabilized, but they are often treacherous to traverse. This severely limits ground-based sampling, and presents a hurdle to clear understanding of the ecology and evolution of the reclamation. For such water bodies, remote sensing provides an alternative means of detecting and monitoring submerged vegetation. The pond shown in Figure 4A has very soft tailings, and had developed channels where streams of bubbles created holes 4 to 10 m in diameter and several metres deep (photo shown in Figure 4A1, taken on the northwest shore), preventing access even from small boats. The airborne imagery (Figure 4A) revealed large amounts of submerged aquatic vegetation in the center of the pond. The discovery of *Ruppia maritima*, was a complete surprise to the limnologists (Borstad et al. 2005). As well as detecting *Ruppia*, the maps of aquatic plant distribution helped to quantify the success of the aquatic reclamation program. Twelve milfoil and aquatic buttercup plant sandwiches had been installed 1996, and in seven years the plants had expanded to cover 13 hectares in low density weed beds, with occasional high density milfoil patches (Larrat Aquatic 2003).

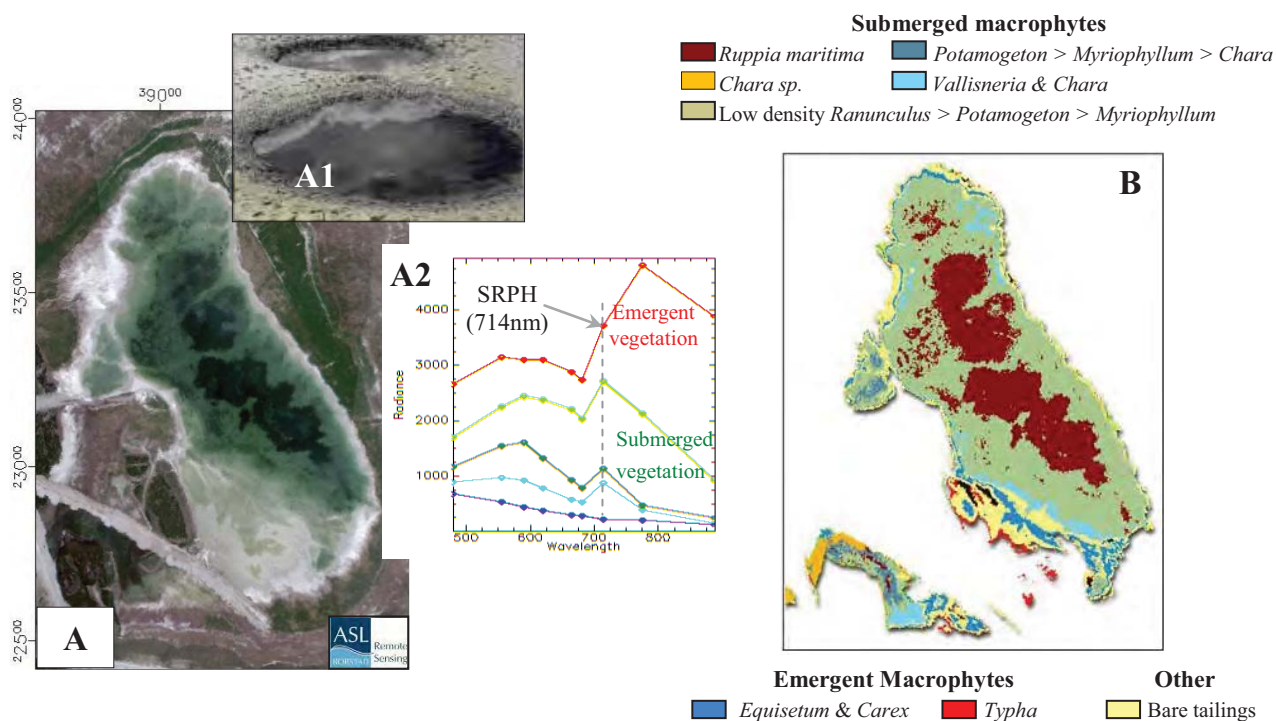


Figure 9. Aquatic plant distribution in a reclaimed tailings pond derived from multispectral CASI imagery

CONCLUSIONS

Remote sensing maps are more than just pretty pictures; they are valuable tools for monitoring and quantifying biophysical changes (Borstad et al. 2008; Lantuit and Polland 2008; Verbyla 2008; Walker et

al. 2005). Aerial remote sensing surveys can be optimized using specific spectral bands to acquire information for vegetation changes in a variety of habitats. Long-term series imagery from aerial or satellite sensors support many kinds of land and water quality monitoring studies, and help to understand where and what changes have taken place, and to quantify the rate of change. Recent cost reductions of remote sensing data have also made this tool more accessible to non-profit groups and other small, independent interests.

ACKNOWLEDGEMENTS

We thank Randy C. Kerr, José B. Lim and Peter Willis, members of the ASL remote sensing group, for their valuable contributions during flight planning, data acquisition, and processing.

REFERENCES

- Armstrong, W.T. 1995. Breeding biology of Black Brant *Branta bernicla nigricans* and Lesser Snow Geese *Chen caerulescens caerulescens* at Anderson River, NWT, 1991 – 1993. Unpublished Report, University of Saskatchewan, Saskatoon, Saskatchewan, and Canadian Wildlife Service, Yellowknife, Northwest Territories. 25 pp.
- Barry, T.W. 1967. Geese of the Anderson River delta, Northwest Territories. Ph.D. thesis, University of Alberta, Edmonton, Alberta. 212 pp.
- Borstad Associates Ltd. 2006. Multispectral mapping of reclaimed areas: extended analysis of the 2005 imagery. Highland Valley Copper 2005 Annual Reclamation Report, Vol. II, report 8.
- Borstad, G.A., M.M.S. Álvarez, J.E. Hines and J.-F. Dufour. 2008. Reduction in vegetation cover at the Anderson River delta, Northwest Territories, identified by Landsat imagery, 1972 – 2003. Technical Report Series No. 496. Canadian Wildlife Service, Yellowknife, Northwest Territories.
- Borstad, G.A., L. Brown, M. Martínez, B. Hamaguchi, J. Dickson and M. Freberg. 2009. Airborne mapping of vegetation changes in reclaimed areas at Highland Valley between 2001 and 2008. Presented at the 33rd British Columbia Mine Reclamation Symposium, 14-17 September 2009, Cranbrook, BC. 10 p.
- Borstad, G.A., M. Martínez, H. Larratt, M. Richards, L. Brown, R. Kerr and P. Willis. 2005. Using multispectral remote sensing to monitor aquatic vegetation at a reclaimed mine site. Presented at the 29th British Columbia Mine Reclamation Symposium, 19-22 September 2005, Abbotsford, BC. 11 p.
- Brown L., M. Martínez, G. Borstad, R. Kerr, P. Willis, M. Richards and P. Witt. 2006. Temporal trends in reclamation assessed with airborne multispectral remote sensing. Presented at the 30th British Columbia Mine Reclamation Symposium, June 19-22, 2006 Smithers, BC.

Carter, G.A. and A.K. Knapp. 2001. Leaf optical properties in higher plants: linking spectral characteristics to stress and chlorophyll content. *American Journal of Botany* 88(4): 677-684.

DigitalGlobe Satellites. 2013. DigitalGlobe Inc. <http://www.digitalglobe.com/about-us/content-collection>

GLOVIS. 2013. The USGS Global Visualization Viewer. USGS, Earth Resources Observation and Science Center (EROS). <http://glovis.usgs.gov>

Jia, G.J., H.E. Epstein and D.A. Walker. 2003. Greening of arctic Alaska, 1981 – 2001. *Geophysical Research Letters* 30(20): 2067.

Jiang, D., Y. Zhang and X. Lang. 2011. Vegetation feedback under future global warming. *Theoretical and Applied Climatology* 106(1): 211-227. doi:10.1007/s00704-011-0428-6.

Kerbes, R.H., K.M. Meeres and J.E. Hines (eds). 1999. Distribution, survival, and numbers of Lesser Snow Geese of the Western Canadian Arctic and Wrangel Island, Russia. Occasional Paper No. 98, Canadian Wildlife Service, Ottawa, Ontario. 120 pp.

Laidler, G.J., P.M. Treitz and D.M. Atkinson. 2008. Remote sensing of Arctic vegetation: Relations between the NDVI, spatial resolution and vegetation cover on Boothia Peninsula, Nunavut. *Arctic* 31(1): 1-13.

Lantuit H. and W.H. Pollard. 2008. Fifty years of coastal erosion and retrogressive thaw slump activity on Herschel Island, southern Beaufort Sea, Yukon Territory, Canada. *Geomorphology* 95: 84-102.

Larratt Aquatic. 2003. Biological Enhancement of Mine Ponds and Assessment of Adjacent Lakes. Volume 2 Report #3. 2002 Annual Reclamation Report. March 2003. Prepared for Highland Valley Copper.

Martínez, M., L. Brown, G. Borstad, J. Dickson and P. Martell. 2012. Multispectral mapping of vegetation changes in reclaimed areas at Highland Valley between 2001 and 2011. Presented at the 36th Annual British Columbia Mine Reclamation Symposium, September 17-20 Kamloops, British Columbia.

Martínez de S. Álvarez, M., L. Brown, G.A. Borstad, P. Martell, J. Dickson and M. Freberg. 2011. Assessment of reclamation status and identification of water stress using airborne remote sensing. Presented at the 35th Annual TRCR Symposium and 6th International Mine Closure Conference, 18-21 September 2011, Lake Louise, Alberta. 8 p.

Peñuelas, J. and I. Filella. 1998. Visible and near-infrared reflectance techniques for diagnosing plant physiological status. *Trends in Plant Science* 3(4): 151-156.

Richards, M., M. Martínez de Saavedra Álvarez and G.A. Borstad. 2003. The use of multispectral remote sensing to map reclaimed areas at Highland Valley Copper. Presented at the 105th CIM Annual General Meeting, 4-7 May 2003, Montréal, QC. 9 p.

Tucker, C.J. 1979. Red and photographic infrared linear combinations for monitoring vegetation. *Remote Sensing of the Environment* 8(2): 127-150.

Verbyla, D. 2008. The Greening and Browning of Alaska Based on 1982-2003 Satellite Data. *Global Ecology and Biogeography* 17(4): 547-555.

Walker, D.A., M.K. Raynolds, E. Einarsson, A. Elvebakk, W.A. Gould, S.S. Talbot & other members of the CAVM Team. 2005. The circumpolar arctic vegetation map. *Journal of Vegetation Science* 16(3): 267-282. doi:10.1111/j.1654-1103.2005.tb02365.

Walker, D.A., H.E. Epstein, M.K. Raynolds, P. Kuss, M.A. Kopecky, G.V. Frost, F.J.A. Daniëls, M.O. Leibman, N.G. Moskalenko, G.V. Matyshak, O.V. Khitun, B.C. Forebes, U.S. Bhatt, A.N. Kade, C.M. Volanthen and L. Tichý. 2012. Environment, vegetation and greenness (NDVI) along the North America and Eurasia Arctic transects. *Environmental Research Letters* 7: 17 pp. doi: 10.1088/1748-9326/7/1/015504.

Wang, J., K.P. Price and P.M. Rich. 2001. Spatial patterns of NDVI in response to precipitation and temperature in the central Great Plains. *International Journal of Remote Sensing* 22(18): 3827-3844.

Yin, Z. and T.H.L. Williams. 1997. Obtaining spatial and temporal vegetation data from Landsat MSS and AVHRR/NOAA satellite images for a hydrologic model. *Photogrammetric Engineering and Remote Sensing* 53(1): 69-77.

Overcoming Northern Challenges

Proceedings of the 2013 Northern Latitudes Mining Reclamation Workshop and
38th Annual Meeting of the Canadian Land Reclamation Association

Whitehorse, Yukon September 9 – 12, 2013

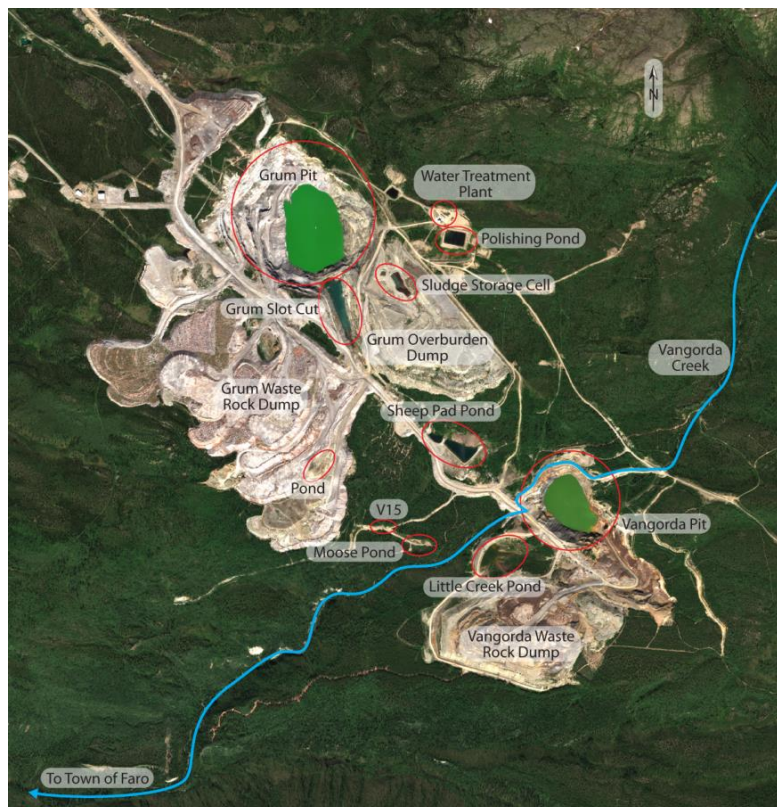


Table of Contents By Presentation Schedule

Northern Latitudes Mining Reclamation Workshop	iv
Canadian Land Reclamation Association	iv
Acknowledgements	v
Citation	v
Conference Sponsors	vi
PAPERS 1	

Tuesday(Below)	Go To Wednesday
Ayres, O'Kane,Hiller,Helps	Performance of an Engineered Cover
Bromley	Innovative Concepts used during Remediation and Reclamation Planning of a Sulphur Handling Facility
Stewart, Karpenin, and Siciliano	Northern Biochar for Northern Remediation and Restoration
Petelina	Biochar application for revegetation purposes in Northern Saskatchewan
Chang	Bioremediation in Northern Climates
Geddes	Management of Canada's Radium and Uranium Mining Legacies on the Historic Northern Transportation Route
Hewitt, McPherson and Tokarek	Bioengineering Techniques for Re-vegetation of Riparian Areas at Colomac Mine, Northwest Territories
Bossy, Kwong, Beauchemin, Thibault	Potential As ₂ O ₃ Dust conversion at Giant Mine (paper not included)
Waddell, Spiller and Davison,	The use of ChemOx to overcome the challenges of PHC contaminated soil and groundwater at contaminated sites
Douheret,	Physico-Chemical treatment with Geotube® filtration: Underground Mine Desludging in winter TTS, Iron (Fe) and Zinc treatment
Coulombe, Cote, Paridis, Straub	Field Assessment of Sulphide Oxidation Rate - Raglan Mine
Smirnova et al	Results of vegetation survey as a part of neutralizing lime sludge valorization assessment
Baker, Humbert, Boyd	Dominion Gurney Minesite Rehabilitation (paper not included)
Martínez, Borstad, Brown, Ersahin, Henley	Remote sensing in reclamation monitoring: What can it do for you?

Wednesday:

Eary, Russell, Johnson,
Davidson and Harrington

Knight

Polster

Dustin

Kempenaar, Marques
and McClure

Smreciu, Gould, and
Wood

Keefer

Pedlar-Hobbs, Ludgate and
Luchinski

Chang, et.al

Heck

Janin

Stewart and Siciliano

Nadeau and Huggard

Simpson

Back To Tuesday

Water Quality Modelling and Development of Receiving
Environment Water Quality Objectives for the Closure Planning
in the Keno Hill Silver District (paper not attached)

Galena Hill, Yukon, Ecosystem Mapping Project

Natural Processes: An Effective Model For Mine Reclamation

Implementation of contaminated water management system
upgrades to allow for dewatering of two open pits at the Vangorda
Plateau, Faro Mine Complex, Yukon

Tools for Arctic Revegetation: What's in Your Toolbox?

Establishment of Native Boearl Plant Species On Reclaimed Oil Sands
Mining Disturbances

Twin Sisters Native Plant Nursery

Key Factors in Developing and Implementing a Successful
Reclamation Plan

Effects of Soil Aggregates Sizes (paper not attached)

Phytoremediation of petroleum hydrocarbon impacted soils at a
remote abandoned exploration wellsite in the Sahtu Region,
Northwest Territories

Passive treatment of drainage waters: Promoting metals sorption
to enhance metal removal efficiency

Biological Soil Crusts and Native Species for Northern Mine Site
Restoration

Restoration Planning and Application of Ecological Succession Principals

Defining Disturbance and Recovery - the influence of landscape
specific ecological responses to oil and gas linear disturbances in
Yukon

POSTERS	244
Practical Field Uses of Remote Sensing	245
Michael Henley ¹ , Gary Borstad ¹ , Dave Polster ² , Mar Martinez ¹ , Leslie Brown ¹ and Eduardo Loos ¹	
Project Case Study – Composite Soil Cover for Sulphide Tailings at Mine Site in Northeastern Ontario, Canada	246
Bruno Herlin, P.Eng.	
Assessment of Sawmill Waste Biochars for the Purpose of Heavy Metal Remediation	255
Tyler Jamieson, Eric Sager and Celine Gueguen	
Determination of Optimal Substrate to Maximize the Revegetation of Cover With Capillary Barrier Effects	256
Sarah Lamothe ¹ , Francine Tremblay ² , Robin Potvin ³ and Evgeniya Smirnova ⁴	
Oil Sands Research and Information Network: Creating and Sharing Knowledge to Support Environmental Management of the Mineable Oil Sands	257
C.B. Powter	
Mineralogical and Geochemical Controls on Metal Sequestration in the Keno Hill Silver District	262
Barbara Sherriff ¹ , Andrew Gault ² , Heather Jamieson ² , Brent Johnson ³ , Scott Davidson ⁴ and Jim Harrington ⁵	
Oil Sands Vegetation Cooperative – A Coordinated Effort to Harvest and Bank Seeds for Reclamation in Northeastern Alberta	263
Ann Smreciu and Kimberly Gould	
Ratroot (<i>Acorus americanus</i>) Propagation and Establishment on Created Wetlands in the Oil Sands Region of Alberta	264
Ann Smreciu, Stephanie Wood and Kimberly Gould	

NORTHERN LATITUDES MINING RECLAMATION WORKSHOP

The Northern Latitudes Mining Reclamation Workshop is an international workshop on mining, land and urban reclamation and restoration methods. The objective of the workshop is to share information and experiences among governments, industry, consultants, Alaska Natives, northern First Nations and Inuit groups which undertake reclamation and restoration projects, or are involved in land management in the north or in comparable environments.

The first Workshop was held in Whitehorse, Yukon Territory, Canada in 2001 and it has been held every two years since, alternating between Canada and Alaska. The primary sponsors of the Workshop include the Yukon Geological Survey, Indian and Northern Affairs Canada, Natural Resources Canada, US Department of the Interior Bureau of Land Management, and the State of Alaska Department of Natural Resources.

CANADIAN LAND RECLAMATION ASSOCIATION

The CLRA/ACRSD is a non-profit organization incorporated in Canada with corresponding members throughout North America and other countries. The main objectives of CLRA/ACRSD are:

- To further knowledge and encourage investigation of problems and solutions in land reclamation.
- To provide opportunities for those interested in and concerned with land reclamation to meet and exchange information, ideas and experience.
- To incorporate the advances from research and practical experience into land reclamation planning and practice.
- To collect information relating to land reclamation and publish periodicals, books and leaflets which the Association may think desirable.
- To encourage education in the field of land reclamation.
- To provide awards for noteworthy achievements in the field of land reclamation.

ACKNOWLEDGEMENTS

The sponsoring organizations wish to acknowledge the work and support of all the people who made this conference a success, including:

- The Conference Organizing Committee: Alissa Sampson, Andrea Granger, Bill Price, David Polster, Diane Lister, Justin Ireys, Linda Jones, Mike Muller, Neil Salvin and Samantha Hudson.
- The Conference Papers and Posters Committee: Andy Etmanski, Bill Price, Chris Powter, David Polster, Diane Lister and Scott Davidson
- The Conference Sponsors (see next page)
- The Conference paper and poster presenters
- Dustin Rainey, Jocelyn Douheret and Brian Geddes for permission to use their photos on the Cover, Papers and Posters pages, respectively

CITATION

This report may be cited as:

Polster, D.F. and C.B. Powter (Compilers), 2013. Overcoming Northern Challenges. Proceedings of the 2013 Northern Latitudes Mining Reclamation Workshop and 38th Annual Meeting of the Canadian Land Reclamation Association. Whitehorse, Yukon September 9 – 12, 2013. 264 pp.