

LEVERAGE OUR LEARNINGS: APPLICATIONS AND OUTCOMES OF BOREAL CARIBOU HABITAT RESTORATION

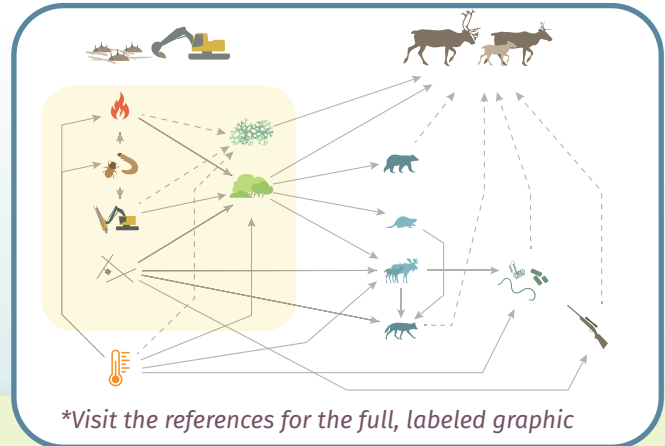


HABITAT RESTORATION IS A KEY PRIORITY TO ADDRESS BOREAL CARIBOU DECLINES.

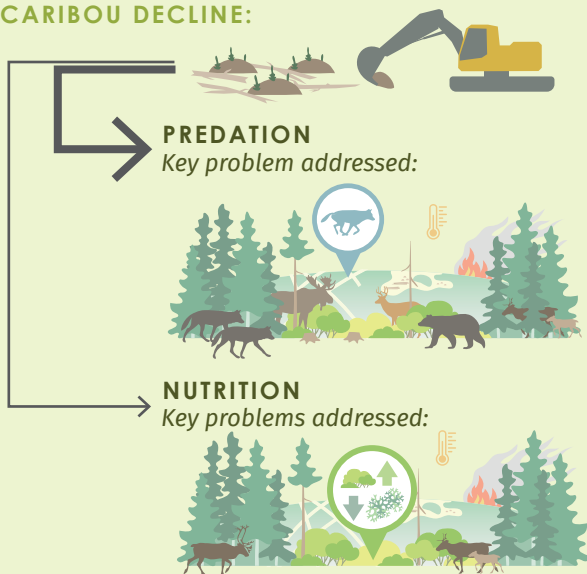
Across Canada, boreal caribou are in decline and their recovery is a key conservation challenge. To support recovery efforts, the Habitat Restoration Working Group of the National Boreal Caribou Knowledge Consortium (HRWG–NBCKC) developed a conceptual model to characterize the different pathways contributing to boreal caribou declines and how they interact. The model can inform habitat restoration by identifying treatments that can be applied to disrupt key pathways.

With habitat restoration projects ongoing, there is a need to review projects and their outcomes to date.

THE BOREAL CARIBOU ECOLOGICAL MODEL*



HABITAT RESTORATION PROJECTS HAVE BEEN CONDUCTED TO ADDRESS TWO HABITAT-RELATED PATHWAYS THAT CONTRIBUTE TO CARIBOU DECLINE:



WHAT HAVE WE LEARNED FROM THESE PROJECTS:



KNOWLEDGE SHARING:

A lot of knowledge gained in the field (e.g., through trial and error) is rarely captured in scientific papers and only partially in reports. We need other knowledge transfer methods to share and leverage these learnings.



SCALE:

There is a need to shift from small-scale treatments and short-term monitoring (e.g., animal movements) to larger-scale treatments and longer-term monitoring (e.g., population responses).



CONFOUNDING FACTORS:

Single restoration treatments can have multiple effects (e.g., affecting both browse and access) associated with separate pathways. This can make it difficult to distinguish effects and to determine which pathway is most important to address (e.g., impede access or reduce browse).



ADAPTIVE MANAGEMENT:

Adaptive management is necessary to maximize learnings—we cannot delay restoration until we know more.



Canadian
Conservation
and Land
Management

TO LEARN MORE ABOUT THE
BOREAL CARIBOU MODEL ON THE
CCLM, VISIT [CCLMPORTAL.CA](https://cclmportal.ca)

References:

Bentham et al. (2022) The Boreal Caribou Ecological Model - Technical Report

Fuse Consulting Ltd. (2022) The Boreal Caribou Ecological Model - Infographic

Wilson, S. (2024) Boreal Caribou Habitat Restoration Practices: Application and Outcomes

DEVELOPING AN EFFECTIVE COMMUNITY OF PRACTICE TO SHARE BEST PRACTICES AND TRAIN FIELD STAFF IS CRITICAL TO SHARE FINDINGS, SCALE RESTORATION EFFORTS, AVOID COSTLY ERRORS AND ULTIMATELY SUPPORT CARIBOU RECOVERY.

Communities of practice can share through:



face-to-face
interactions



presentations



site visits

Communities of practice are key for sharing information about permitting, project design and implementation and involves other land users and rightsholders throughout the process.

